

# Whitewater Project Northern Saskatchewan



## Directors

Leigh Curyer, *Chairman*  
Craig Parry, *President and CEO*  
Christopher McFadden  
Richard Patricio  
Trevor Thiele

## Management

Craig Parry, *President and CEO*  
Steve Blower, *VP Exploration*  
Janine Richardson, *CFO*  
Keith Bodnarchuk, *Corp Dev Manager*  
Andy Carmichael, *Senior Geologist*  
Justin Rodko, *Project Geologist*

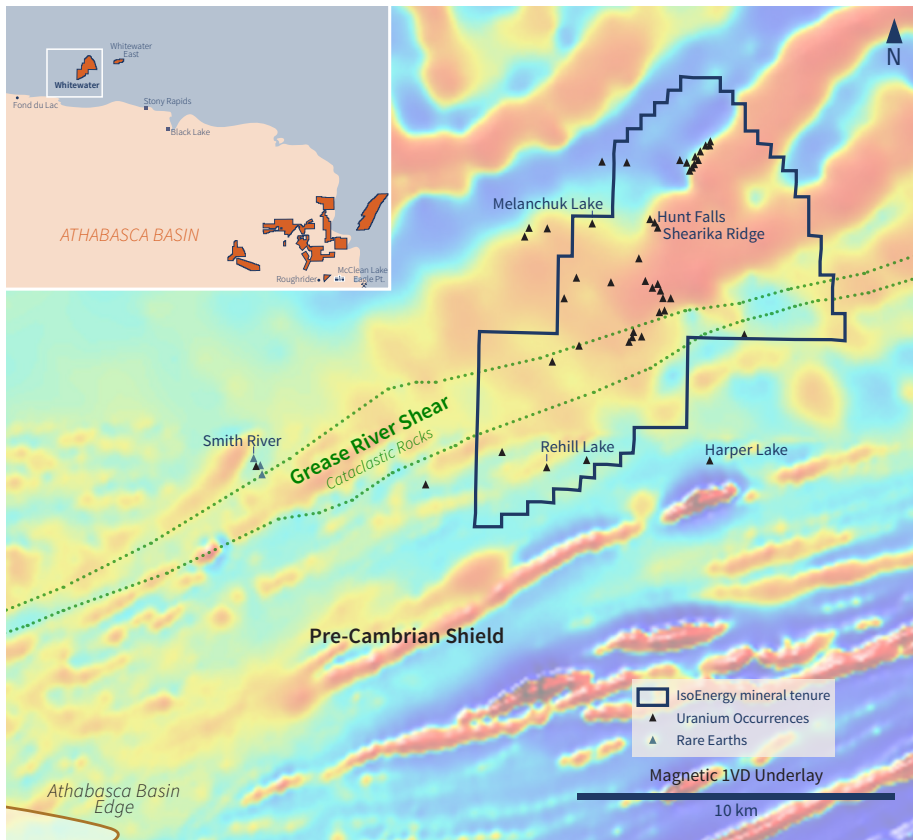
## Contact

Keith Bodnarchuk, *Corp Dev Manager*  
kbodnarchuk@isoenergy.ca  
T +1 778 867 2631

## IsoEnergy Ltd.

970 – 1055 West Hastings St.  
Vancouver, BC, Canada V6E 2E9  
+1 778 379 3211  
info@isoenergy.ca

The Whitewater Project is located 32 kilometres northwest of Stony Rapids and 15 kilometres northeast of the Athabasca Basin. The property comprises 5 claims totalling 7,833 hectares and covering 11 km of the Grease River Shear.



## Historical Work

### 1950 through 1960s: Five Star Petroleum and Mines Ltd and Magma Mines Ltd

- Trenching and pit blasting of several radioactive pegmatites and pitchblende veins
- Ten-foot zone of yellow staining with up to 18,000 cps on handheld scintillometer at Melanchuk Lake
- Polymetallic pitchblende vein with up to 0.65%  $U_3O_8$  at Smith River
- Up to 1.6%  $U_3O_8$  along pitchblende bearing fault within biotite gneiss west of Hunt Falls

### 1970s through 1980s: SMDC and Cominco Resources Ltd

- Up to 1.18%  $U_3O_8$  in lake sediments at Rehill Lake
- Up to 0.14%  $U_3O_8$  along 20-metre-long exposure of fault scarp near Harper Lake

### 2007 through 2011: CanAlaska Uranium

- Lake sediment sampling, prospecting, trenching, and mapping
- Over 80 outcrop samples with over 1,000 ppm uranium from Shearika Ridge
- Identification of several REE rich outcrops with up to 31,320 ppm total rare earth elements at Smith River

- Diamond drilling at Shearika Ridge

- Six holes totaling 796.4 metres all encountered mineralization with the best result of 0.021%  $U_3O_8$  over 24.4 metres

### 2018: IsoEnergy Ltd

- Ground truthing confirmed uranium-rich pegmatites, veins, and outcrop on the property
- Aster Spectral Data Interpretation indicates several illite and/or hematite anomalies present

## Potential

- Covers over 11 km of strike length of the regional-scale Grease River Shear
- Vast areas of underexplored ground including several currently-untested radiometric and spectral anomalies
- Over one kilometre of exposed radioactive pegmatite at Shearika Ridge – similar to Rossing-style uranium mineralization
- Anomalous rare earth element concentrations in outcrop

## Next Steps

- Closely spaced airborne radiometric and magnetic surveying
- Further ground-truthing, prospecting, and trenching of airborne anomalies and currently isolated geochemical anomalies

## Whitewater Claim Summary

Claim	Hectares	Effective Date	Annual Assessment	Expiry Date
MC00010378	2,439	January 18, 2018	\$36,585	Apr 18, 2023
MC00010392	2,565	January 18, 2018	\$38,472	Apr 17, 2024
MC00011063	1,562	May 14, 2018	\$23,436	Aug 12, 2025
MC00014023	459	June 17, 2020	\$6,887	Sept 15, 2022
MC00014025	808	June 18, 2020	\$12,113	Sept 16, 2022
<b>Total</b>	<b>7,833</b>		<b>\$117,493</b>	